

BRING THESE LABEL WORLD ADVANTAGES TO YOUR BRAND MANAGEMENT

- World class digital printing- we can help you manage large number of short run SKUs with these additional capabilities:
 - Hot foil
 - Embossing and spot coatings
 - Customization
- Beyond prime labels
 - Two-ply labels
 - Booklet labels
 - Pouches and flexible packaging
- Sustainability let us work with you on innovative solutions
For your sustainability scorecard
- Winner of Best of the Best Workplaces in the Americas
award from Printing Industries of the Americas for several
years running
- cGMP compliant quality system



1-800-836-8186

WWW.LABELWORLDUSA.COM

LET LABEL WORLD HELP YOU WITH YOUR PRINT READY PDF PREPARATION

WHY PRINT READY PDF'S ?

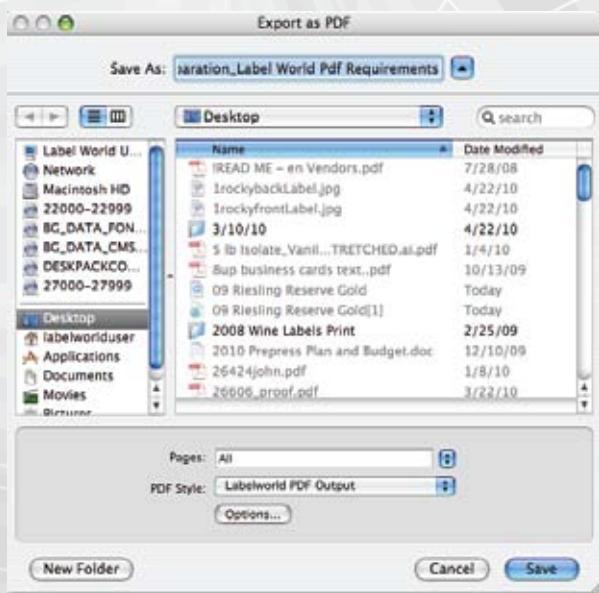
- You have more control over your project
- Fewer touches means fewer mistakes
- Faster turn around to press
- Reduces costly changes to your art



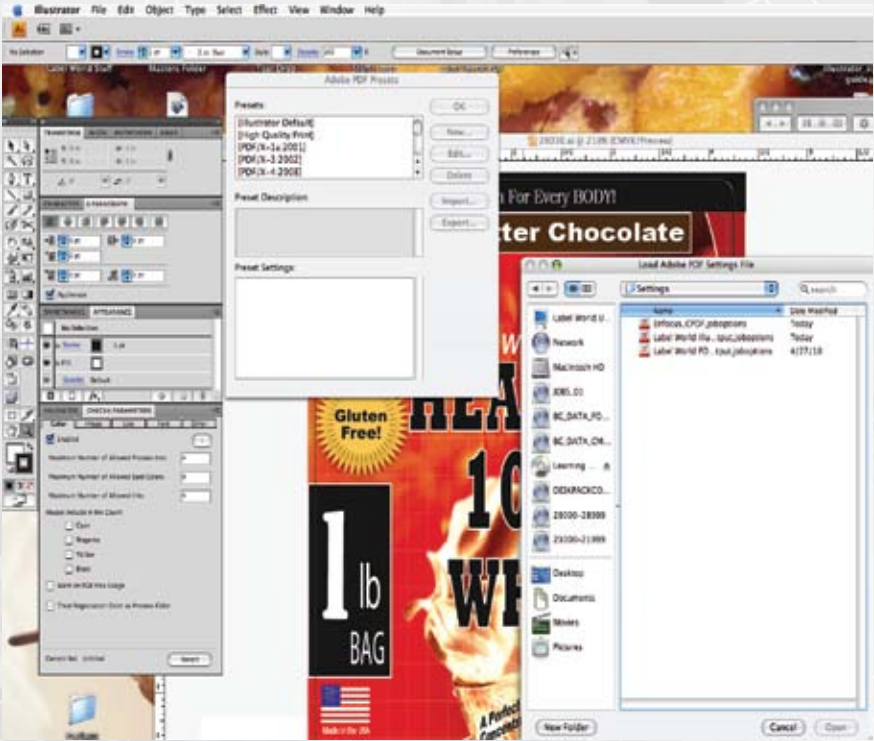


DIELINE SETTINGS

- Attributes - Overprint Stroke.
- Layers - Dieline & Art on separate layers.
- Dieline swatch set as a spot color.



- Select PDF style
- Label World PDF Output



IMPORT (CONTINUED)

- Label World Illustrator PDF

QUARK

- Delete all unused colors in the color pallet.
- Build file to final trim size with 1/16th inch bleed. extending beyond final trim size.
- 1 Color black text set to overprint.
- Use only PANTONE names for Pms spot colors.

DIELINE PREPARATION

- Set the round corner radius of your dieline.
- Make the dieline the same size as your document.
- Set dieline to a .5 pt stroke weight or frame weight.
- Create a spot color called “dieline” and set the dieline to that color.
- Place dieline on a separate layer and set it to overprint in attributes (illustrator or InDesign) or in trapping (quark).

SUPPORT ART

IMAGES (TIFF,EPS,PSD,JPEG)

- Scaling: we do not recommend scaling images up or down over 20% of its original size.
- Resolution: it is important to remember that resolution in a raster image (i.e., Photoshop) is device dependent, and when scaling, the image resolution will be adversely affected. An image resolution of 300 dpi, and not scaled up or down beyond 20 percent of the original size, will produce the best results.
- Do not embed any color or device dependent profiles.
- CMYK, Grayscale, Duotone, Monotone modes are acceptable. Save images as 300 dpi Tiffs, EPS, PSD or JPEG's.

VECTOR ART

(ILLUSTRATOR,FREEHAND,COELDRAW)

- Delete Unused colors in the color swatch pallet.
- Covert text to outlines.

INDESIGN

- Delete all unused colors in the color pallet.
- Build file to final trim size with 1/16th inch bleed extending beyond final trim size.
- 1 Color black text set to overprint.
- Use only PANTONE names for Pms spot colors.

DIELINE PREPARATION

- Set the round corner radius of your dieline.
- Make the dieline the same size as your document.
- Set dieline to a .5 pt stroke weight or frame weight.
- Create a spot color called “dieline” and set the dieline to that color.
- Place dieline on a separate layer and set it to overprint in attributes (illustrator or InDesign) or in trapping (quark).

SUPPORT ART

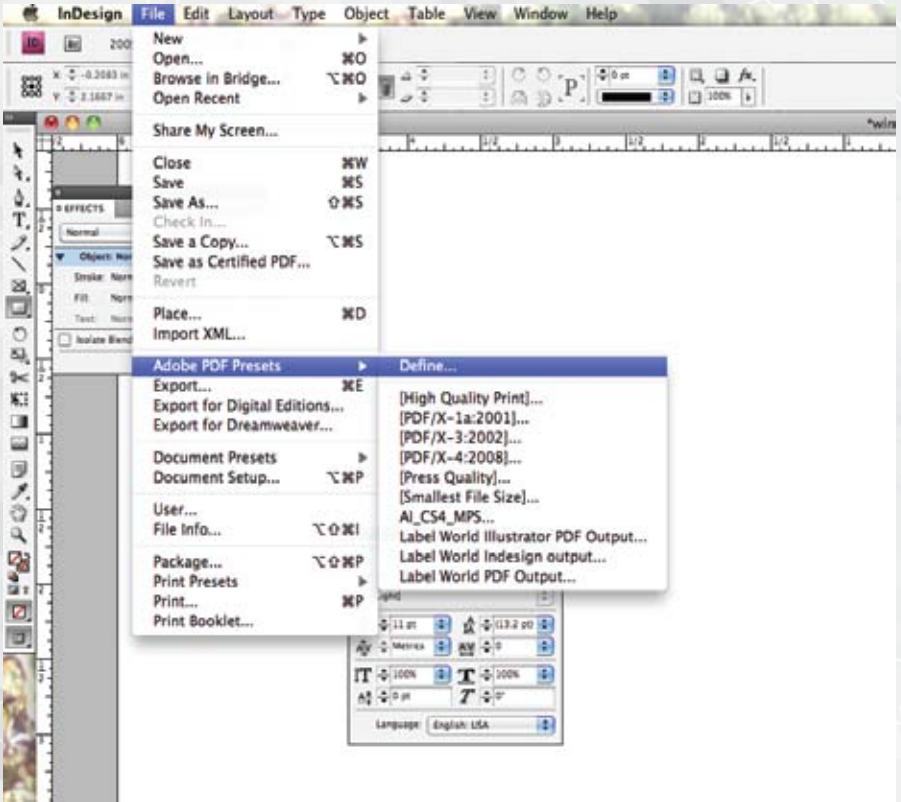
IMAGES (TIFF,EPS,PSD,JPEG)

- Scaling: we do not recommend scaling images up or down over 20% of its original size.
- Resolution: it is important to remember that resolution in a raster image (i.e., Photoshop) is device dependent, and when scaling, the image resolution will be adversely affected. An image resolution of 300 dpi, and not scaled up or down beyond 20 percent of the original size, will produce the best results.
- Do not embed any color or device dependent profiles.
- CMYK, Grayscale, Duotone, Monotone modes are acceptable. Save images as 300 dpi Tiffs, EPS, PSD or JPEG's.

VECTOR ART

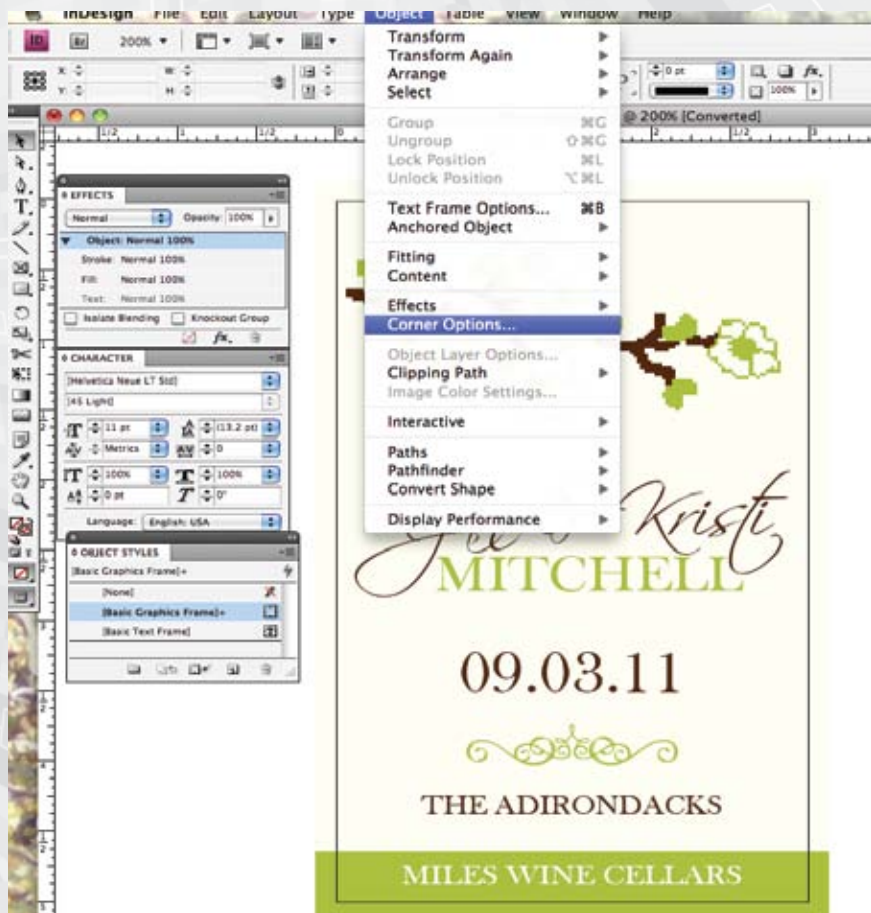
(ILLUSTRATOR,FREEHAND,CORELDRAW)

- Delete Unused colors in the color swatch pallet.
- Covert text to outlines.



IMPORT PDF JOB OPTIONS

- Edit
 - Adobe PDF Presets
 - Define



HOW TO SET A ROUND CORNER RADIUS

- Object
 - Corner options